

PARTS LIST

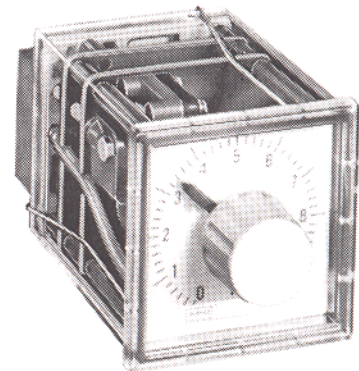
ARO PNEUMATIC LOGIC CONTROL LOGIC FUNCTION ASSEMBLY

PNEUMATIC TIMER

**MODELS 59832-
59833-
59834-**

FORM 1526-2
REV. 5/92

MODEL NO.	TIMING RANGE
59832-10	0.3 – 10 sec
59832-100	3 – 100 sec
59833-10	0.3 – 10 min.
59833-100	3 – 100 min.
59834-10	0.3 – 10 hr.
59834-100	3 – 100 hr.



**IMPORTANT: READ THIS MANUAL CAREFULLY BEFORE INSTALLING,
OPERATING OR SERVICING THIS EQUIPMENT.**

DESCRIPTION

Time delay between the initial application of air pressure to the unit and the switching of the output is controlled by a constant speed air motor and reduction gearing, independent of operating pressure. The time cycle is started by a pressure signal at port X. The cycle is reset by venting the pressure signal at port X for a minimum of 200 msec.

INSTALLATION

Pressure regulation is recommended to maintain constant system pressure.

Lubrication is not required.

Filtration – 5 micron filtered, dry air supply.

OPERATING PRESSURE RANGE

20 to 115 P.S.I.G.

TEMPERATURE RANGE

+32°F to +160°F

FLOW

C_v value = .085

TIMING ACCURACY

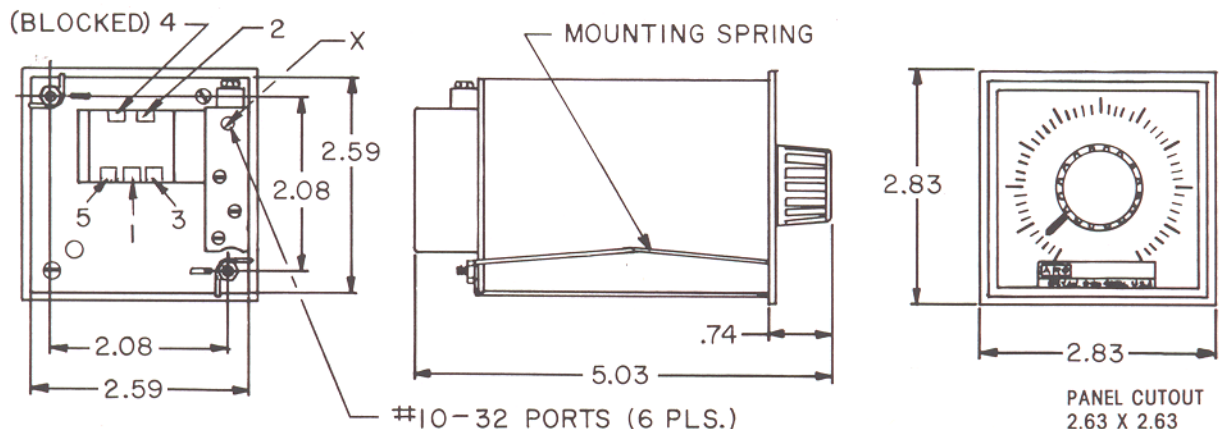
±1% of Full Scale reading



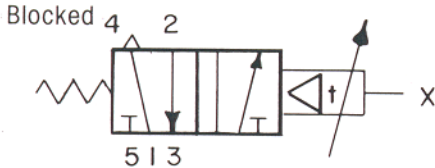
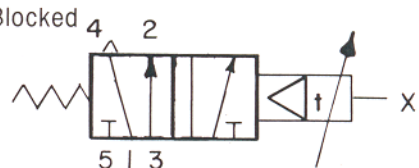
AIR CONSUMPTION

3 cfm @ 85 p.s.i.g.

REPEATABILITY

±2%



LOGIC SYMBOL	LOGIC FUNCTION	PORT DESIGNATION
	TIMING IN (Delay ON)	X = Input to Timer Motor. 2 = Output. 1 = Supply for "Timing In" Function. 3 = Supply for "Timing In Inverted" Function. 4 = Blocked.
	TIMING IN INVERTED (Delay OFF)	
INTERNAL CIRCUIT & CHARACTERISTICS		
<div><div><p>Blocked 4 2</p><p>5 1 3</p><p>TIMING IN</p><p>INPUT X</p><p>OUTPUT 2</p><p>SUPPLY 1 0</p><p>START X</p><p>t = selected time delay</p></div><div><p>Blocked 4 2</p><p>5 1 3</p><p>TIMING IN INVERTED</p><p>INPUT X</p><p>OUTPUT 2</p><p>SUPPLY 3 0</p><p>START X</p><p>t = selected time delay</p></div></div>		